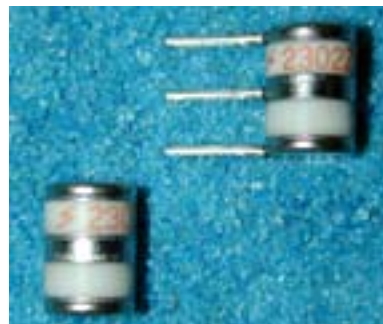
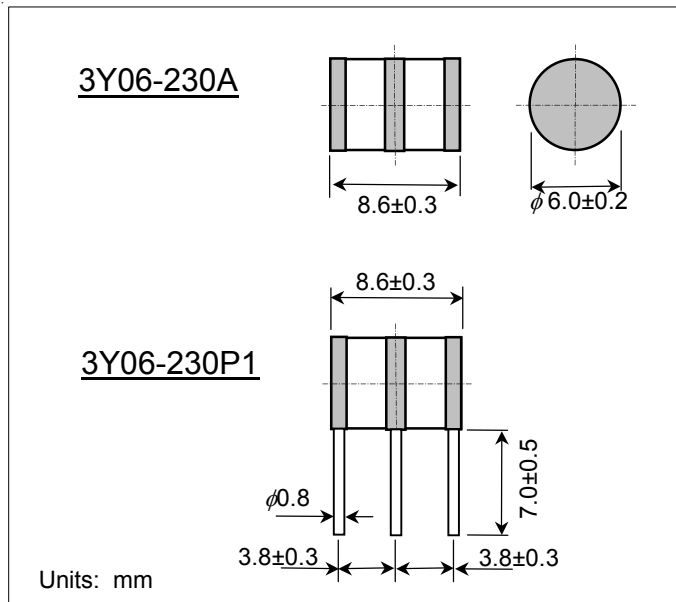


# Three Electrode Gas Tube Surge Arrester

Part Number: 3Y06-230A / 3Y06-230P1



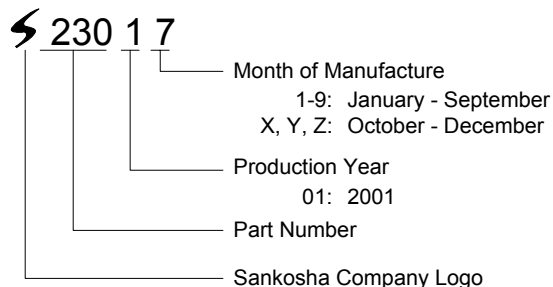
## Applications:

Transient Voltage Surge Suppression  
 Telephone Network Interfaces  
 Modems/Cable Modems  
 xDSL Modems and Peripherals  
 Building Entry/Outside Plant

## Features:

Non-Radioactive  
 100% Lead Free (RoHS Compliant)  
 Durable Construction  
 Low Capacitance  
 Proven Performance  
 ISO 9001 Certified  
 World Renowned Quality

## Marking



## Electrical Characteristics

1.	DC Breakdown Voltage	100 V/sec	230V ± 20%	(L1-E) (L2-E)		
2.	Impulse Breakdown Voltage	1 kV/μsec	< 700V	(L1-E) (L2-E)		
3.	Insulation Resistance	DC 100V	> 10,000 M-ohm			
4.	Capacitance	1 MHz	< 3.0 pF			
5.	DC Holdover Voltage	See Note	< 135V	Note: In accordance with ITU-T K.12or IEEE C62.31-1987 Test Circuit		
6.	Impulse Life	10/1000 μsec	200 A	> 100 times	(L1+L2-E)	
7.	Impulse Discharge Current	8/20 μsec	10 kA	Each Polarity 5 Times	(L1+L2-E)	
8.	AC Discharge Current	50 Hz	10 A	One Second	5 Times	(L1+L2-E)

## After Life Tests

9.	DC Breakdown Voltage	100 V/sec	180-300V			
10.	Impulse Breakdown Voltage	1 kV/μsec	< 900V			
11.	Insulation Resistance	DC 100V	> 100 M-ohm			

SANKOSHA

SANKOSHA